

# K2 KaiTrade Install Guide

---

This document describes how to install KaiTrade's K2 Accelerator series software.

The document has the following sections:

- RTD Install (for Excel 2007 and 2010)
- Installing the main Application
- Testing your install

If you do not intent to use Excel, you can skip the RTD Install and simply install the main application.

## 1 Uninstall Any previous KaiTrade software

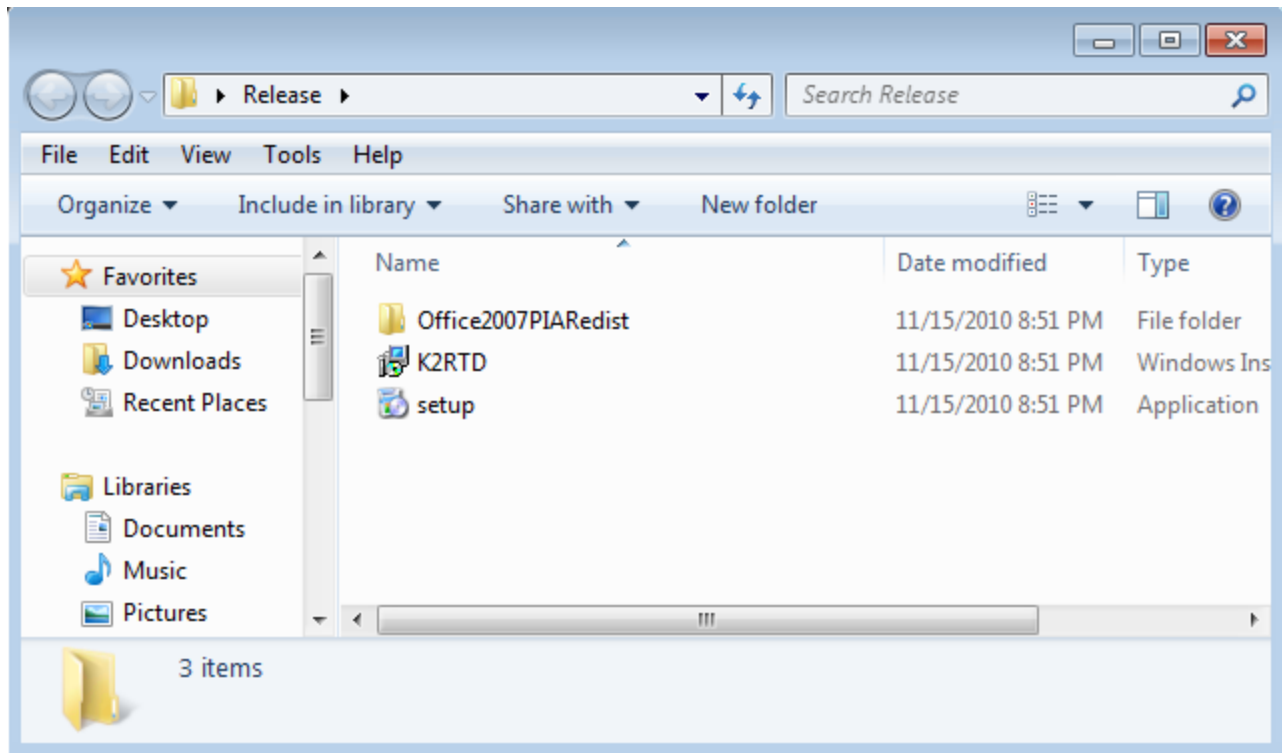
You need to uninstall any existing versions of KaiTrade software from using the control panel.

## 2 RTD Install(Excel 2007 & 2010)

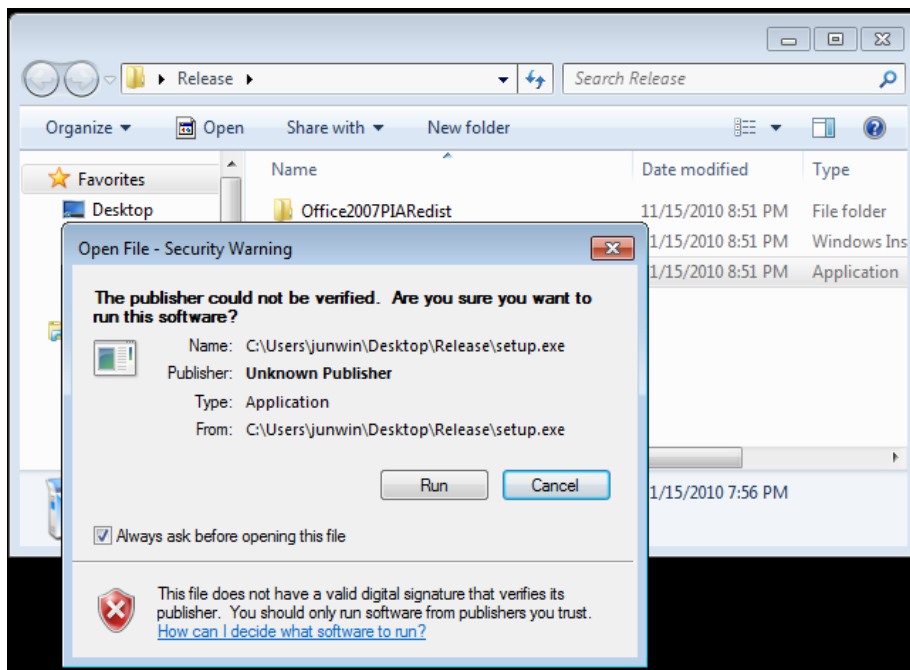
**Note, If you are using Excel 2003 - please consult the Excel 2003 section before continuing.**

The first thing is to install the RTD Server software this lets Excel talk to KaiTrade. Download the installer from: <http://www.kaitrade.com/K2/download/K2TCPRTD.zip>

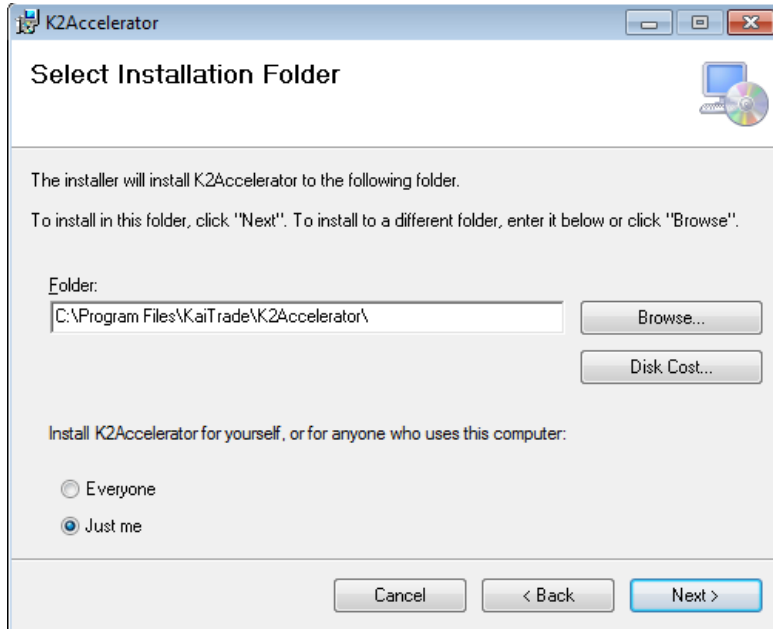
Copy the release folder from the .zip file to a convenient location (e.g. the Desktop)



Run the setup.exe in the release folder - you will need administrator rights to install this. Press run if the screen below appears:



Do not change the install folder:



## 2.1 Excel 2003

If you are using Excel 2003 then you need to download:

<http://www.kaitrade.com/K2/download/KRTDExcel2003.zip>

Open the KRTDExcel2003 folder in the .zip and then run the following programs:

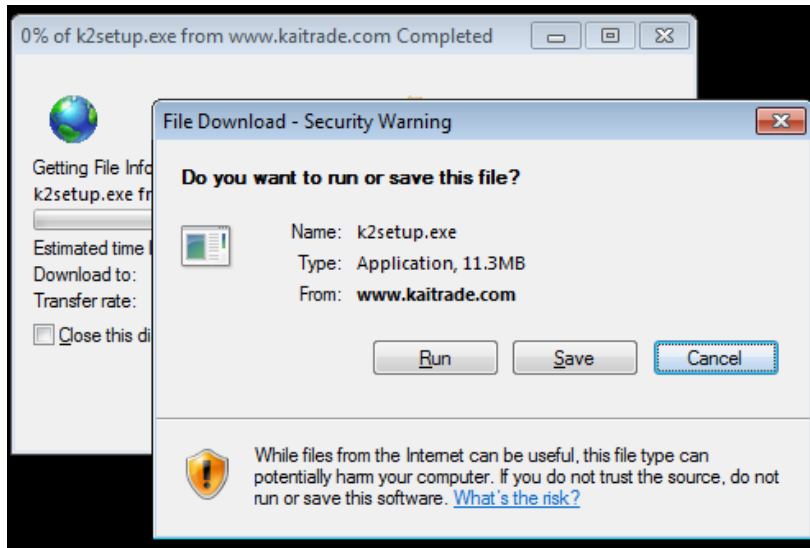
- extensibilityMSM.msi
- lockbackRegKey.msi
- office2003-kb907417sfxcab-ENU.exe

You can then install the rest of the RTD as normal.

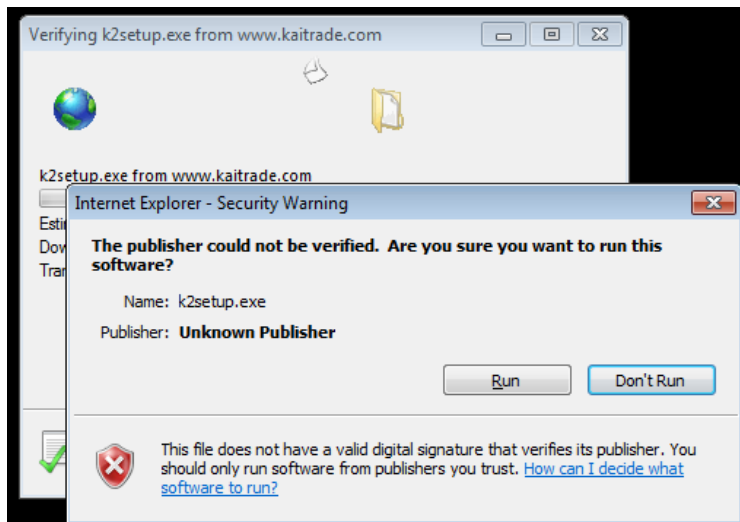
### 3 Install Main Application

To install the KaiTrade main application. Download the installer from:  
<http://www.kaitrade.com/K2/download/k2setup.exe>

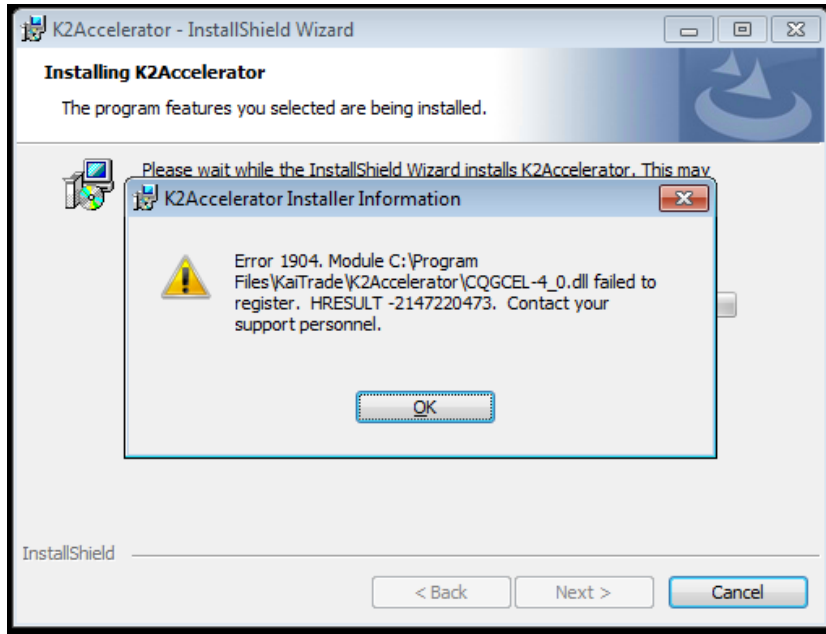
You can either save the installer and run it, or click Run see below:



If you get a security warning (see blow) press Run



Non CQG users will see the following screen - press OK



After this installer completes you have installed KaiTrade.

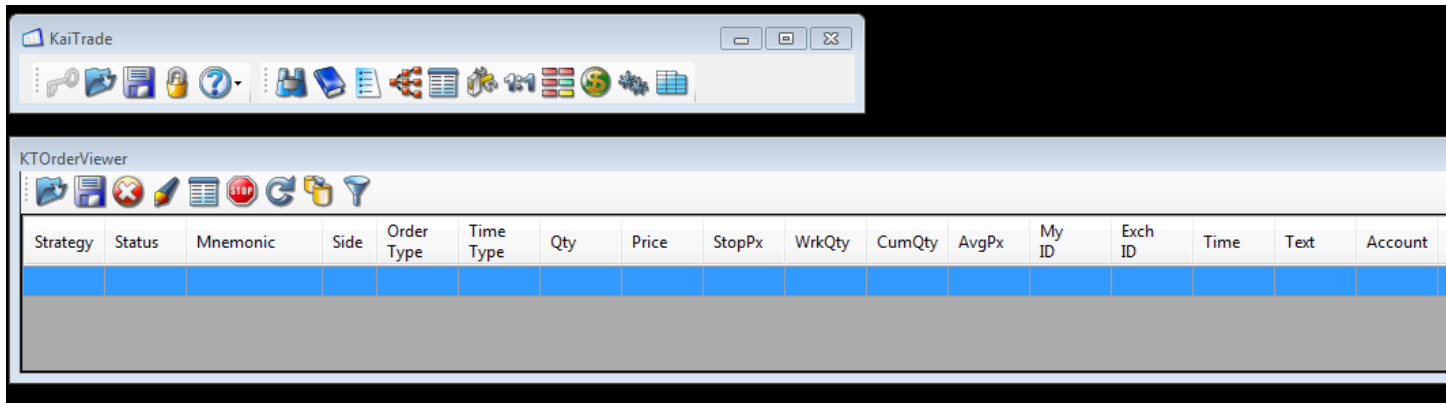
## 4 Testing


You can easily test that the installation has been completed - First start KaiTrade with:

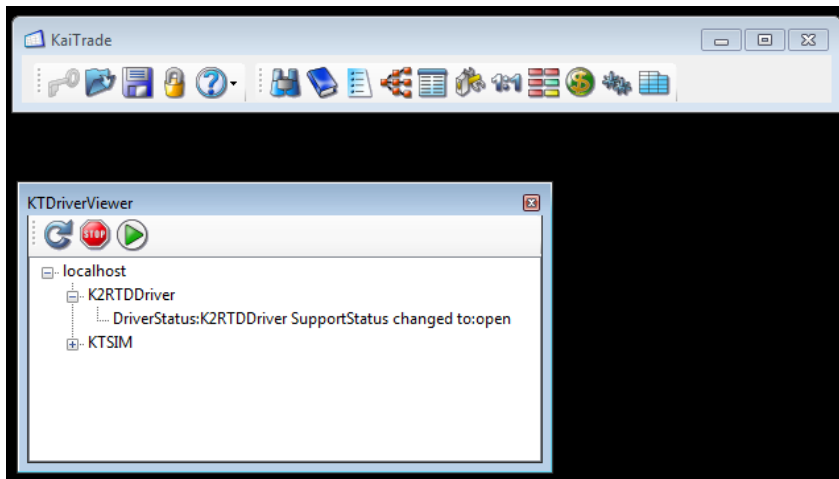
User=k2tcp

Password=k2tcp

You will see the application appear as below:



Click on the KTDriverViewer icon  you should see the following after clicking the refresh and expanding the localhost tree:



Notice that the K2RTDDriver is shown as open.

You can also test the Excel function by Download the following sheet:

<http://www.kaitrade.com/K2/download/k2FirstExecuteOrder.xls>

Save to the desktop or other location, if you open the sheet and look at the Advanced and Prices sheet - you should see prices updating:

